

Marbury Ward - Parish Update - January 2026

Dear Residents, Parish Councils and Community Group

As we begin 2026, we send our warmest wishes for a happy, healthy, and successful New Year. Thank you for your continued role in making our communities strong, supportive, and resilient. We're proud to represent you on the Borough Council and of the progress made locally over the past year.



This update highlights key developments in Marbury Ward and across Cheshire West and Chester. As your local Conservative team, we continue to work at every level - including with MP Esther McVey - to support our rural communities, farms, and businesses.

We remain committed to action that delivers results, using the strong relationships we've built with council officers to get things done. With 2027's local elections approaching, we're focused on the opportunity to return Conservative leadership to a council that's more efficient, responsive, and focused on everyday concerns.

2027 will also bring the first election of a Mayor for Cheshire and Warrington. We'll be proudly backing Conservative candidate Ben Fletcher and look forward to introducing him locally. Alongside Esther McVey, we'll continue working as a united team to put residents, communities, and businesses first.

Thank you again for your continued support and collaboration throughout 2025.

With best wishes for 2026,

Cllrs Lynn Gibbon, Phil Marshall & Norman Wright

[Report it | Cheshire West and Chester Council](#)

[Ward profiles | Cheshire West and Chester Council](#)

[Out of hours contact information | Cheshire West and Chester Council](#)

**A few attachments in the Appendices*

Key Updates:

1 Provisional Local Government Finance Settlement 2026-27

What it Means for Cheshire West and Chester?

The Government's Provisional Local Government Finance Settlement, announced on 17 December 2025, sets funding allocations for councils for the next three years - offering some financial certainty beyond a single year. It includes an updated assessment of local needs through the long-delayed Fair Funding Review – *how fair that is, remains to be seen*.

Cheshire West and Chester Council (CWAC) will see its Core Spending Power increase by 19% over three years (6.7% in 2026–27), slightly above the national average. However, 75% of this increase assumes the Council raises council tax by the maximum allowed (2.99% plus a 2% social care precept) every year, shifting the burden increasingly onto our residents.

Grants have been streamlined from 54 into just five, including new allocations for:

- Children and Families (supporting social care reform),
- Crisis and Resilience Fund (replacing the Household Support Fund),
- Homelessness and Domestic Abuse and
- Public Health (e.g. drug and alcohol treatment).

Schools funding increases by £27.1m (6.7%), but the High Needs Block (SEN) remains under pressure. Although funding will rise to £66.7m, CWAC forecasts it will spend £81.7m, leading to a growing deficit that is currently carried forward under a temporary accounting override (due to expire in 2028). The Government plans to assist with this, but conditional on “inclusive education” reforms that remain undefined.

Early years funding increases by £13.2m, reflecting the expansion of free nursery places for 9-month to 2-year-olds. Pupil Premium rates will rise by 2.3%.

The provisional settlement clearly raises some questions which need to be addressed:

1. Will maximum council tax rises now become unavoidable to maintain local services, given the high reliance on local taxation?
2. Is the 2026–27 High Needs funding gap sustainable and what reforms will be expected in exchange for government help?
4. Are the new streamlined grants sufficient, or will they reduce local flexibility?
5. What other adhoc/discretionary funding has been removed, that CWaC has benefited from previously?

Officers are analysing the settlement in more detail, with further updates expected later this month, including capital funding announcements.

2 Parish & Ward Campaigns

- Green Belt protection campaign and local survey now [live](#)

- **Petition: Witton Street (Northwich) resurfacing -** Petition presented to full council last year by Cllr Lynn Gibbon. This issue will now be referred to Scrutiny committee. Having received well over a thousand signatures from local residents, this issue has also been picked up in the local press.

cheshirewestconservatives.org.uk/news We will now be pushing for concerns addressed as part of the Weaver Square Development.



- **Finger Posts** - Interesting Article included in the [Appendices](#) regarding Historic England's move to protect historic signage (could be something to think about).

3 Northwich Regeneration

Cheshire West and Chester Council has signed a Pre-Development Agreement with VINCI UK Developments Ltd and ION Property Developments Ltd to begin regenerating Weaver Square in Northwich.

The plan will deliver over 100 new homes, improved public spaces, and features to boost footfall and support local businesses on Witton Street, High Street, and Barons Quay. A masterplan will be co-designed with residents and businesses in 2026 to ensure the development reflects local aspirations. The focus is on replacing outdated 1960s buildings with sustainable, high-quality spaces that enhance Northwich's identity and economy.

Progress is also being made elsewhere. The new market fit-out is moving forward, with traders appointed and a contractor due on site in early 2026. Library Express is now open at Northwich Memorial Court, offering book services beyond normal hours. The main library remains temporarily at Weaver Hall Museum, with the refurbished Witton Street building set to reopen by winter 2026/27.

4 Policing

Rural Policing – Motion to Full Council Dec 25 on PCSOs

In December, Cllr Phil Marshall tabled a successful motion at Full Council calling for a requested review of Cheshire Constabulary's proposal to reduce Police Community Support Officer (PCSO) numbers. We argued that:

- PCSOs provide essential visibility and early intervention
- Cuts would disproportionately impact rural areas with already stretched coverage
- Local confidence in policing depends on accessible, uniformed presence

The motion passed and a review has now been launched. We are monitoring this closely and remain in contact with the Police and Crime Commissioner to ensure rural voices are heard.

Marbury Policing - please see the [link](#)

Key [Contacts](#):

PCSO Diane Wiggins
Constable Dan Vinton

Updated Reporting Guide: [Reporting crime and ASB | Cheshire West and Chester Community Safety Partnership](#)

5 Winter Support and Public Health Campaigns

Seasonal support across the borough includes:

- Pharmacy First access to treatment for minor conditions
- Vaccination clinics for flu and COVID-19
- Warm Welcome venues in the ward
- The Living Well Bus offering free health checks
- 'You're Safe Here' venues trained to support anyone feeling vulnerable
- [We urge all residents to look out for neighbours and to use the local support available.](#)

[See the Council website for more details:](#)

6 Devolution 2026 - Cheshire & Warrington

No further update since December but general information is available on the link [Combined Authority](#)



The Mayoral elections will be run in May 2027 - the Candidate for the **Conservative Party** is **Ben Fletcher**
See Video on the [Link](#)

7 Responding to Labour's Policy Agenda – Local Impact

Since Labour formed the Government in July 2024, we have raised concerns around rising taxes, removal of the winter fuel allowance in 2025, changes to the inheritance tax structure for family farms and businesses, changes to planning which threaten our rural communities and wider policy proposals that disadvantage rural communities and local business.

The latest damaging legislative change to tackle in 2026 is the **Employment Rights Bill**.

Whilst presented as 'pro-worker', its practical effects include:

- Limiting employer flexibility and casual work arrangements
- Increasing red tape, legal risk and payroll costs
- Discouraging small-scale recruitment and new ventures
- Ultimately created more pressure and risk for business and a general disincentive to create employment.

We are working with colleagues in Parliament and within our Party to challenge the Bill, seek common-sense amendments and ensure that the interests of our local economy and residents are not only protected but provide the foundation for sustainable, solid employment and opportunities for growth.

8 EV Charging

Cheshire West and Chester Council will install at least 790 new electric vehicle (EV) charge points between 2026 and 2030 - 60% on-street, 40% in council car parks. Backed by £2 million in government funding, the rollout aims to support residents without off-street parking.

A Charge Point Operator (CPO) will be appointed to deliver and expand the network at no additional cost to taxpayers. Local consultation will shape charger locations, considering power supply, street layout, and parking proximity. Footpath safety and accessibility will be prioritised.

A pilot for pavement cable channels (e.g. Kerbo Charge) launches in Spring/Summer 2026, helping residents safely run charging cables from home to vehicle. The scheme will be part-funded by a £111,000 council grant pot, with individuals covering the majority of installation costs - similar to home EV chargers.

9 You're Safe Here Initiative - Tackling Domestic Abuse strategies implemented with borough-wide training.

Launched in October 2025, *You're Safe Here* is a Cheshire West and Chester accreditation scheme offering safe spaces in public venues for anyone feeling vulnerable or at risk.

Venues displaying the window sticker have trained staff ready to support people facing issues such as spiking, harassment, hate crime, or mental health distress. Backed by the Community Safety Partnership, the scheme includes key sites like Storyhouse, Chester Cathedral, Anderton Boat Lift, and Chester Racecourse.

Training is free and delivered monthly. Accredited venues receive a practical guide covering scenarios from lost children to scams, including how to de-escalate incidents, offer reassurance, and help people get home safely.

The scheme encourages a culture of care and vigilance across the borough, without focusing on specific groups or issues. It reflects the council's commitment to ensuring public spaces, particularly in hospitality, are welcoming and supportive.

Residents are urged to look for the *You're Safe Here* sticker and feel confident that help is available when needed.

[See appendices:](#)

10 'Special education Needs & Disabilities' Peer review feedback

- External Review of SEND Services in Cheshire West and Chester

An independent review of Special Educational Needs and Disabilities (SEND) services in Cheshire West and Chester was carried out in October 2025. Led by the Local Government Association, the review assessed how well local services are working together to support children and young people with SEND.

Key strengths identified include strong partnership working, a committed workforce and high-performing health services. The Council's Virtual School was praised and growing trust was noted between professionals and parent carers. Co-production - working with families - is seen as an emerging area of strength.

However, the review raised concerns about **delays in assessments, pressures from rising demand and the higher-than-average proportion of children with Education, Health and Care Plans (EHCPs) in the borough**. Strategic planning and communication need improvement, and families often find the Local Offer unclear or inaccessible.

Ten recommendations were made, including:

- Boosting early intervention to reduce reliance on EHCPs,
- Developing a clearer SEND communication strategy,
- Creating a single SMART action plan aligned with the SEND strategy and
- Improving data, provision planning and support for parent carers.

The Council welcomes the findings and will use them to support improvements as part of its ongoing SEND inspection and transformation work.

11 Planning

National Planning Policy Framework Consultation

In December 2025, the Government launched a new consultation on the **National Planning Policy Framework (NPPF)**, proposing a major restructure of national planning guidance. This includes merging plan-making and decision-making policies into a single framework, with a new focus on thematic chapters and annexes offering technical detail (such as housing need calculations and **Green Belt review methodologies**) – “one to watch!”

Key proposals include:

- **Greater support for development within walking distance of railway stations** - which could affect settlements like Cuddington, Hartford, Mouldsworth and Frodsham.
- **Encouragement of medium-sized housing sites (10–49 homes)** to make financial contributions instead of on-site affordable housing - raising concerns about local housing mix.
- **Scope for more development on existing residential plots and increased density** around stations.
- **Strategic planning via Spatial Development Strategies (SDSs)** - suggesting a shift of planning powers from local to regional bodies.
- **New accessibility standards** for housing and confirmation that **parking standards** will be set by local authorities.

Local Impact and Questions

Cheshire West and Chester Council will need to carefully consider these proposals, which may:

- Increase pressure for **higher density development** in already constrained areas.
- Reduce **local discretion** over housing targets and Green Belt protections.
- Make it harder to insist on **affordable housing** in smaller developments.
- Place more emphasis on development near rail links, which could reshape rural and semi-rural communities.

The Council will respond formally by **10 March 2026** and residents and parish councils are encouraged to engage directly with the consultation.

Key Questions:

- Will national policies override local plans and neighbourhood aspirations?
- How will the council manage the balance between growth, infrastructure and community character?
- Are current rural transport links strong enough to justify 'rail-connected' growth designations?

Now is the time for local voices to help shape this future.

Infrastructure, Planning and Environmental Action

We continue to monitor planning enforcement backlogs and the impact of major developments on the ward.

- Planning Enforcement remains under pressure - we have raised concerns directly with the Chief Executive and have a face-to-face meeting later this month with the Head of Planning to discuss and agree actions.
- We have also agreed a more structured approach to residents and stakeholders feeding into the process by which conditions are discharged on complex planning applications. A good example of this, are the 41 conditions related to the Winnington Solar Farm Development that was permitted, at 'Appeal', by the Secretary of State. These conditions could be discarded over a number of years, so we felt a clearer, more robust route to feed into the technical team, who complete the assessment, was required.
- Flood risk and gully clearance continues in known hotspots, any omissions are being reported.
- Marbury Country Park volunteer team has delivered exceptional outcomes - despite major delays in the provision of a suitable base. We are pressing officers for immediate remedial action.
- We are also supporting local community's to 'help themselves' – seeking permissions and advice for community development and improvements to drainage. These may not be a top priority for the Council, but we can see the immediate local benefit, so we are always happy to get involved and endeavour to remove any 'blockers' / mediate within the system.

12 Highways

Statutory undertaker works (i.e. gas, electric, B.T. and water) on the highway network are all on [Causeway one.network](#)

General Update: Cheshire West and Chester Council's Highways Team has secured a £9.2 million funding boost for 2025/26, increasing the total highways budget to over £29 million. This will fund a wide range of maintenance and improvement works across the borough.

Plans include:

- Repairing **12,500 potholes**
- Resurfacing **5km of roads**
- Treating **55km** of carriageway
- Replacing **550 old streetlights**
- Cleaning **50,000 gullies**
- Upgrading traffic signals at key junctions in Chester, Neston and Hartford

New flood defence works will also take place in Tattenhall, Chester and Hooton, while 25 bridges will receive maintenance. A full structural risk review of the borough's bridges is also underway.

The **Community-Led Minor Works Initiative**, trialled across all 45 wards, allows local parishes to request small-scale tasks like overgrown vegetation removal and sign cleaning. So far, over 100 jobs have been completed. Residents and Parish Councils are also encouraged to get involved through the **Highways Volunteer Scheme**, with training and support available. Outcomes for Marbury under the **Community-led scheme** are pending but disappointingly, still outstanding. We are talking to officers to confirm completion dates.

For all local information please use this [link](#)

Reminder: Swing Bridge Sutton Weaver

When is this happening Next?

15 to 22 February 2026 - Bridge work completion and testing will require a full road closure so works have been programmed during schools holidays in February 2026, to reduce disruption.

The Canal & River Trust will provide updated information through the different stages of this project. on their website: www.canalrivertrust.org.uk

13 Live Public Consultations

All live CWAC consultations available [online](#).

1. **Appointee Service Charge Consultation**

Link: <https://participatenow.cheshirewestandchester.gov.uk> (search *Appointee Service Charge*)

Purpose: This consultation seeks views on proposed changes to the way service charges are applied for people who receive financial support but need an “appointee” (someone the Council nominates to help manage their benefits).

Why Residents Should Engage: If you or someone you care for relies on an appointee arrangement, your views will help shape fairer and clearer charging arrangements.

2. **Planning Policy Consultations (Including Local Plan)**

Link: <https://consult.cheshirewestandchester.gov.uk> (Planning policy consultations)

Purpose: The Council is consulting on planning policy proposals, notably the **Local Plan “Issues & Options”** approach which will help decide how land is used for **homes, jobs, infrastructure and environment** across the borough for the next 15+ years.

Why Residents Should Engage: This affects housing numbers, where development happens, transport, green spaces and community facilities - impacting where you live and how places grow.

3. **2026–27 School Admission Arrangements**

Link: (via the Council consultations page)

Purpose: Sets out how school places will be allocated for September 2026–27.

Why Residents Should Engage: Parents and carers can help shape admissions criteria, catchment areas and priorities so allocations are fair and reflect community needs.

4. Draft Contaminated Land Strategy Consultation

Link: <https://participatenow.cheshirewestandchester.gov.uk> (search *Contaminated Land Strategy*)

Purpose: Seeks views on the Council's approach to identifying, assessing and managing land that may pose health or environmental risks due to contamination.

Why Residents Should Engage: Helps ensure local land is safe for living, working and recreation and lets you raise concerns about specific sites.

5. Healthy Child Programme Consultation

Link: <https://participatenow.cheshirewestandchester.gov.uk> (search *Healthy Child Programme*)

Purpose: Focuses on early years health services (like immunisations, screenings and support for families).

Why Residents Should Engage: Your feedback helps shape health services for babies, children and young people - particularly important for parents and carers.

Residents are encouraged to engage in these consultations to ensure that Marbury Ward and the wider borough benefit from responsive, community-led decision making.

14 Members Budgets 2025-2026

Community Funding

The Member Budget Award Scheme for 2025/26 allocates £5k to all Councillors to support local projects and initiatives aimed at improving the quality of life and wellbeing of their communities. Funding is provided to recipients as a discretionary award and is aimed at addressing local priorities for action.

(With 3 Ward Councillors in Marbury, we have a combined budget of £15k)

Our Member Budgets have helped fund a diverse range of local projects this year including:

- Village Defibrillators
- Warm Hub initiatives
- Litter Group Safety Equipment
- Accessibility Upgrades to community Buildings
- Youth activities and equipment for local sports groups
- Flood defence /drainage improvement in Whitley
- Support for new village facilities



And we are pleased to welcome the **Robert Bakery Brass Band** to their new home in **Wincham**, supported by **Witton Albion FC**.

Member Budgets – Final Application Window

Deadline: Applications close on 31 January 2026.

Funds must be spent by **31 March 2026**.

Please act swiftly if you are considering a submission as we still have budget to allocate for the 2025_26 financial year.

[Application Link](#)

15 Other Funding Opportunities:

Funding Opportunities: [Funding opportunities | Cheshire West and Chester Council](#)

Branching Out - The Tree Council

The Branching Out small grants fund aims to support a new season of community tree planting.

[Branching Out Fund - The Tree Council](#)

NEW Community Garden Grants - [Community Garden Grants - National Garden Scheme](#)

NEW Green Heat Network Fund - Department for Energy Security & Net Zero The Green Heat Network Fund (GHNF) is a capital grant fund that supports: the commercialisation and construction of new low and zero carbon (LZC) heat networks (including the supply of cooling) the retrofitting and expansion of existing heat networks [Green Heat Network Fund \(GHNF\): guidance on how to apply - GOV.UK](#)

Million Hours Fund - This funding is for organisations to give extra support to young people in areas with higher rates of anti-social behaviour. They'll fund extra hours of youth work to give these young people more places to go and positive things to do. Million Hours Fund | The National Lottery Community Fund

Access without limits grants - DofE

This fund is open for applications until January 2026. Grant funding of up to £10,250 is available for eligible community and voluntary organisations to set up and deliver the DofE, as well as the enrolment costs for young people taking part.

DofE not only offer grant funding but support organisations every step of the way. This includes training for your staff and volunteers.

Access Without Limits - Community - The Duke of Edinburgh's Award

Energy Efficiency Funding [Energy Efficiency Sharematch | Crowdfunder.co.uk](#)

[The Stobart Sustainability Fund | Stobart \(eddiestobart.com\)](#)

Grants for Charities or CIO's - [What We Fund - Bernard Sunley Foundation](#)

[Grants for historic church interiors and churchyard structures | The Church of England](#)

[Small Grants | Trusthouse Charitable Foundation](#)

[Cheshire West and Chester Community Chest 2025 is open! - Cheshire Community Action](#)

Following Cheshire West and Chester Council's announcement on the commencement of the 2025 Community Chest small grants scheme (up to £500), Cheshire Community Action is now inviting applications from local community groups and organisations.

Climate Action Fund: Our Shared Future (tnlcommunityfund.org.uk)

Aviva Community Fund [Aviva Community Fund](#)

Veolia Funding (veoliatrust.org)

Biffa Funding [Home Page - Biffa Award](#)

Blue Spark Foundation - grants for projects supporting children and young people [Home - Blue Spark Foundation](#)

Energy Resilience Fund - Power to Change

The Energy Resilience Fund is an initiative assisting community businesses in retrofitting their buildings with energy-saving measures. [Energy Resilience Fund - Power to Change](#)

Electricals Recycling Fund - Material Focus

The Electricals Recycling Fund aims to grow existing methods or test new creative and practical ones for recycling small household electricals. If you have a project that would make it easier for the public to repair, reuse or recycle their electricals, you can apply for funding. [Electricals Recycling Fund - Material Focus](#)

London Hearts - defibrillator funding <https://londonhearts.org/defib-scheme/>

<End>

Appendices



Q | News Sport Business Calculators Money Opinion Ukraine Travel Health

[See all News](#)

Classic British road signs saved by heritage listing

Historic England move to protect icons of early motoring from developers and hedge cutters



92



Gift this article free



Historic England said the listed signs offer 'a glimpse of early road transport in England' [Credit: Historic England](#)



Patrick Sawyer
Senior News Reporter

11 December 2025 7:00am GMT

With their sturdy cast ironwork and bold lettering, they pointed the way for travellers in the early days of motoring, but road widening schemes have

long since swept away our early wayfinder signs.

Now, a number of survivors have been granted protection, saving them for future generations.

Three cast-iron motoring guideposts in the Cheshire parish of Ashley were listed by Historic England this year following fears that they would fall victim to future road developments.

Experts from Historic England said they offered “a glimpse of early road transport in England”.

Dating from the late 19th to early 20th centuries, each guidepost, standing at a triangle of minor roads in the parish, displays a slightly different design.

The posts, crafted by W H Smith & Co (Whitchurch) Ltd, feature scalloped or squared finger ends and distinctive finials, including the firm’s chess pawn motif.

Historic places and buildings granted protection in 2025



Guideposts, Ashley, Cheshire

Dating from the late 19th to early 20th centuries, each guidepost, standing at a triangle of minor roads in the parish, displays a slightly different design. They illustrate the evolution of fingerpost styles in response to motor travel legislation.

Joining them on the protected list was a boundary post on Epping Road, Essex, one of the last of 280 such markers that once formed a ring around

London to show where duty was payable on coal imported into the capital.

Advertisement



The coal duty boundary post is described as “a tangible reminder of London’s industrial past and taxation system to help London rebuild after the Great Fire of 1666”.

The distinctive Victorian marker was erected in the 1860s and provides a physical reminder of the tax on coal that helped fund London’s development following the Great Fire.

The duty system originated with the First Rebuilding Act of 1667 and evolved over centuries as coal transportation shifted from sea to road, canal and rail routes.

New markers such as this one were required when a further act of Parliament aligned the duty boundary with the Metropolitan Police District in 1861. The tax continued until 1891, when the Corporation of London relinquished its collection rights.

Cast by Henry Grissell of the Regents Canal Ironworks, the white-painted

square column features a pyramidal top, the City of London crest and the inscription '24 VICT', referring to the 1861 Act.

Charles O'Brien, Historic England's listing and architectural research director, said: "Epping council was concerned that roadside management and maintenance, such as verge cutters, would put the coal duty marker at risk.

"Similarly, Ashley parish council was worried that future road improvements could impact historic signposts. Listing both of these, along with other sites of interest, means they will be saved for future generations to admire and enjoy."

RECOMMENDED

Historic England turns spotlight on the everyday

[Read more →](#)

Among the other highlights of the 199 historic buildings and sites added to the National Heritage List for England in 2025 was an Arts and Crafts-era garden near the North Yorkshire Moors, decorated with an array of 50 hand-made gnomes, elves and pixies.

The Tudor Croft garden in Guisborough was restored by the current owners, Mike Heagney's parents, after they moved into the house in 1952.

Rare dockside equipment in Greenwich linked to the first telephone cable that allowed calls between Britain and America, which became operational in 1956; a set of "Dragon's Teeth" Second World War anti-tank defences in Surrey; and a Modernist purpose-built lecture theatre block at the University of Manchester Institute of Science and Technology (UMIST), were also included.

Claudia Kenyatta and Emma Squire, the co-chief executives of Historic England, said: "These newly protected places demonstrate the remarkable diversity of England's heritage. They connect us to the people and events

that shaped our communities.

“From ancient burial sites to shipwrecks and wartime defences to post-modernist buildings, street furniture and Arts and Crafts gardens, these sites reveal the fascinating history that surrounds us all.”

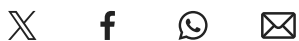
Baroness Twycross, the heritage minister, said: “Britain’s heritage is as varied as it is brilliant, with each of these buildings playing a part in shaping our national story over the centuries.

“This year alone, we have protected 199 heritage sites, from neolithic cairns in the Yorkshire Dales to the fabulous Catholic cathedrals in the heart of Liverpool. I’m proud that we’re safeguarding our rich history so future generations can continue to enjoy it.”

Join the conversation

Show 92 comments

The Telegraph values your comments but kindly requests all posts are on topic, constructive and respectful. Please review our commenting policy.



Related Topics Roads, Motoring, Heritage

License this content



Patrick Sawyer
Senior News Reporter

11 December 2025 7:00am GMT

Cheshire West & Chester Council



Play **your** part towards
a **Stronger Future**

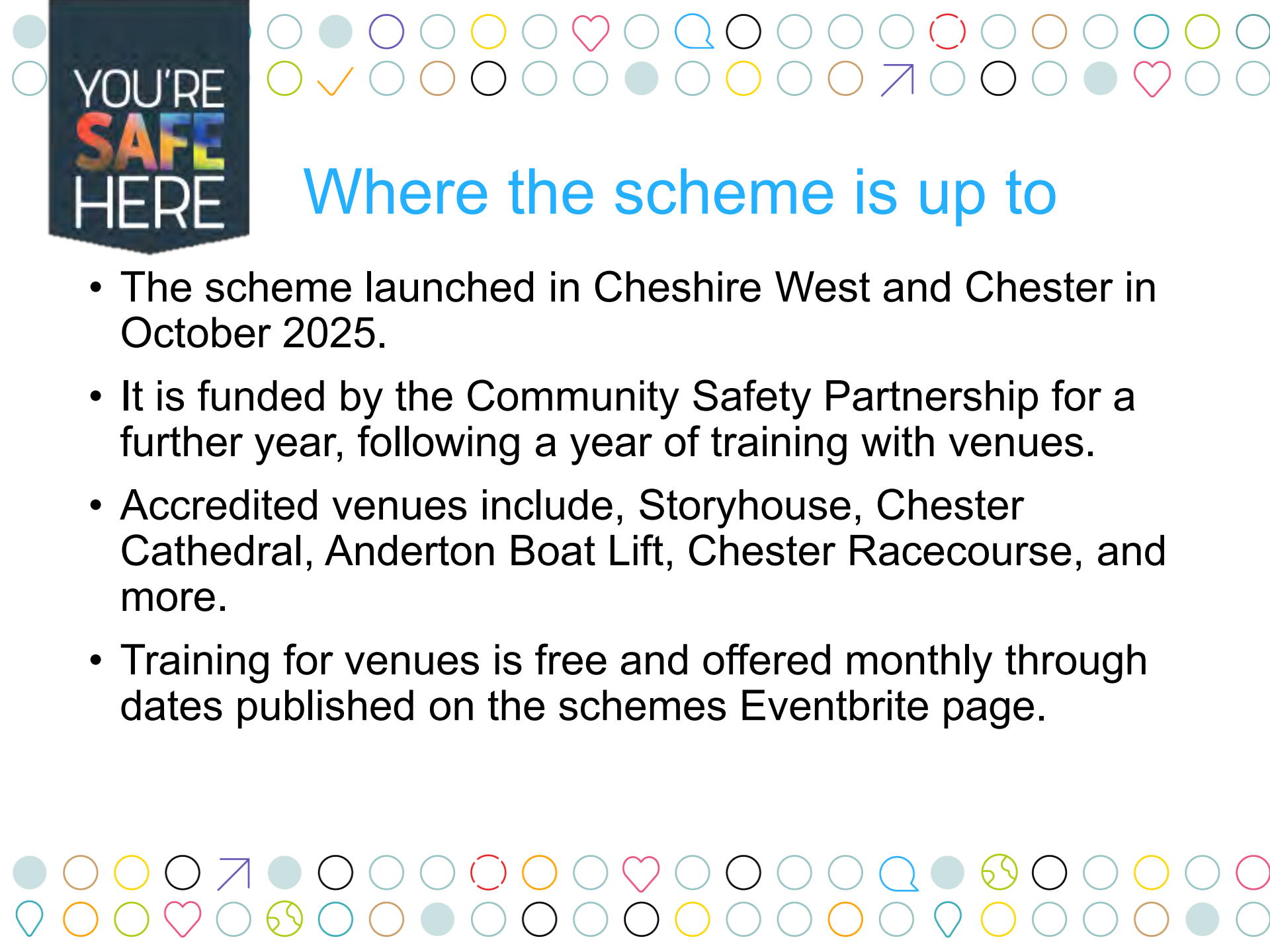
 Cheshire West
and Chester

YOU'RE
SAFE
HERE

Why You're Safe Here!

- You're Safe Here is a venue accreditation scheme designed to support victims of crime, vulnerable people, or anyone needing support.
- Any venue with a You're Safe Here window sticker will have staff trained in how to support someone who is feeling vulnerable.
- Each venue is issued with a guide upon accreditation which outlines how to support people, for example victims of hate crime, people who have been spiked, or people who are lost and require assistance.
- The scheme is designed not focus on any one type of issue or group, as anyone can be vulnerable or need support.





YOU'RE
SAFE
HERE

Where the scheme is up to

- The scheme launched in Cheshire West and Chester in October 2025.
- It is funded by the Community Safety Partnership for a further year, following a year of training with venues.
- Accredited venues include, Storyhouse, Chester Cathedral, Anderton Boat Lift, Chester Racecourse, and more.
- Training for venues is free and offered monthly through dates published on the schemes Eventbrite page.

YOU'RE
SAFE
HERE

**This venue
is a safe
place for
everyone**

Our staff have been trained to support anyone who has been a victim of crime or feels unsafe.

YOU'RE
SAFE
HERE

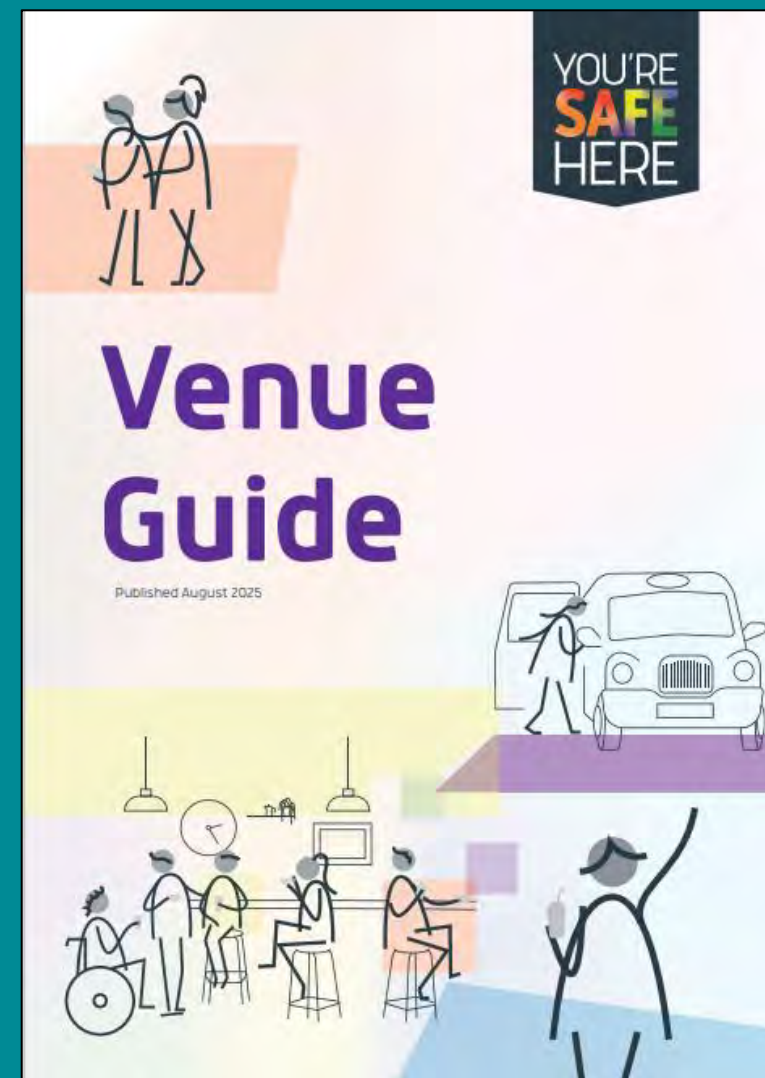
The You're Safe Here Guide

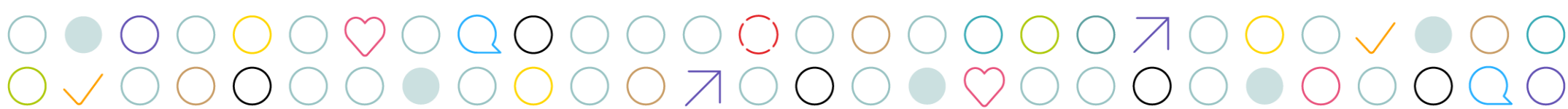
Guide Sections:

- Domestic Abuse
- Disability Awareness
- Escaping harm and 'cuckooing'
- Hate Crime
- Homelessness and rough sleeping
- Intoxication
- Lost children or other vulnerable people
- Mental Health & Self Harm
- Scams and Fraud
- Sexual harassment or assault
- Spiking
- Water Safety

Advice for venues

- Ask for Angela
- Evidence and Reporting
- Incident-specific responses
- Getting Home or to a Place of Safety
- What happens when you report to Cheshire Police
- Advice on opening a conversation (The power of 'Hello')
- What it means to be somewhere safe (including access)
- Complaints
- You're Safe Here contact details





The You're Safe Here Guide

Each Section contains:

- An introduction to the section
- Advice on what to look out for
- Guidance on understanding what's happened
- Guidance on what venue staff can do:
 - ☐ Preventing immediate danger
 - ☐ Safeguarding
 - ☐ Providing support
 - ☐ Gathering information
 - ☐ Keeping safe
 - ☐ Seeking help
 - ☐ Reporting
 - ☐ Support services
- Guidance on helping people get home safe
- Hints and tips

The guide can be used by accredited venues to respond to incidents and provide support, and to proactively train staff to prepare for any incidents that may happen whilst also raising awareness of these issues.

It also ensures that accredited venues can support people, even if staff / volunteers haven't completed the training themselves, which protects the integrity of the scheme.



YOU'RE
SAFE
HERE

The You're Safe Here Guide



STOP!

Before proceeding to use this guide consider

"Is it an emergency?"

Call 999 if ...

There is an immediate danger to life.

**Someone is using violence
or is threatening to be violent.**

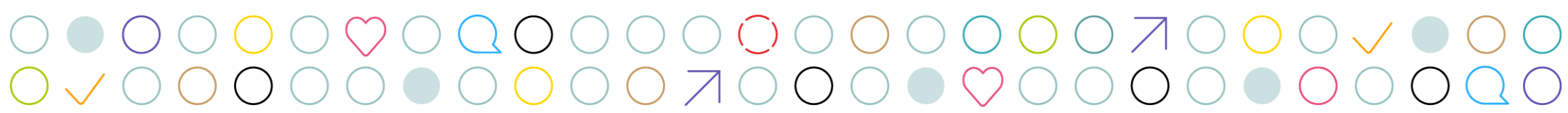
**A crime is happening right now,
like drug dealing or a theft.**



You will never be penalised for calling 999 if you think it is an emergency. **If in doubt, make the call.**

Contents

- 9 Domestic Abuse
 - 10 Disability Awareness
 - 12 Escaping harm and 'cuckooing'
 - 13 Hate Crime
 - 14 Homelessness and rough sleeping
 - 16 Intoxication
 - 18 Lost children or other vulnerable people
 - 20 Mental Health & Self Harm
 - 21 Scams and Fraud
 - 22 Sexual harassment or assault
 - 24 Spiking
 - 26 Water Safety
- Advice section for venues**
- 27 Ask for Angela
 - 28 Evidence and Reporting
 - 29 Evidence and Reporting: Incident-specific responses
 - 30 What happens when reporting to the police
 - 30 Getting Home or to a Place of Safety
 - 31 What it means to be somewhere safe
 - 32 Services
 - 34 Notes



The You're Safe Here Guide

Venue Specifics

Venue Name: _____

You're Safe Here lead: _____

Date Accredited: _____

You're safe here venue contacts: _____

Agreed guide storage location: _____

This booklet has been designed as guidance to support your venue dealing with situations that may arise in your venue. This guide is designed to compliment any existing policies or procedures in your venue.

If you are unsure, always speak with your manager to agree how you should respond.



YOU'RE
SAFE
HERE

The You're Safe Here Guide

Tips on effective
communication

Who needs to
be involved?

What it means to be somewhere safe
(including accessibility)

Tips to
de-escalate

Things to think about
(tips for talking to a victim)

Establishing what has happened?

Getting Home or to
a Place of Safety

Managing a
crime scene

What happens when
reporting to the police

